

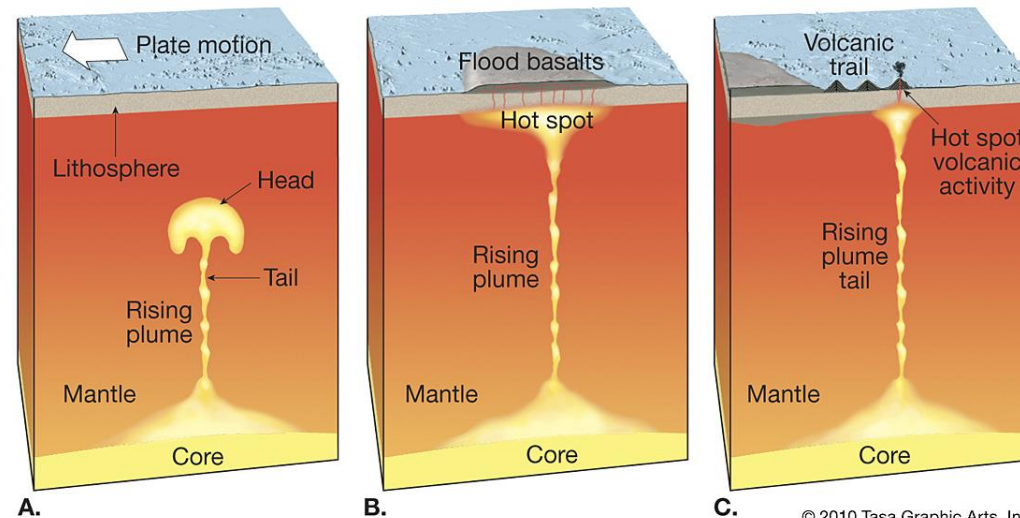
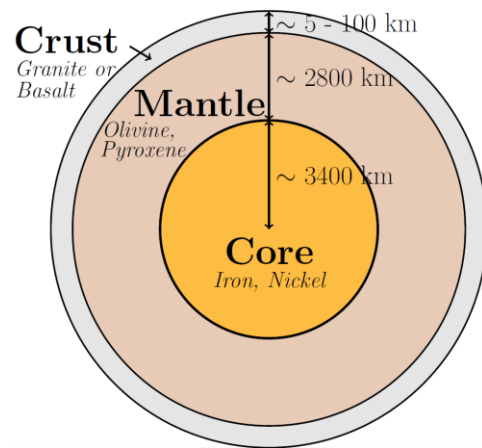
# Thermal plumes in complex fluids

Thibaut Chass , Anne Davaille, Laboratoire FAST, Universit  Paris-Saclay & CNRS, Orsay, France

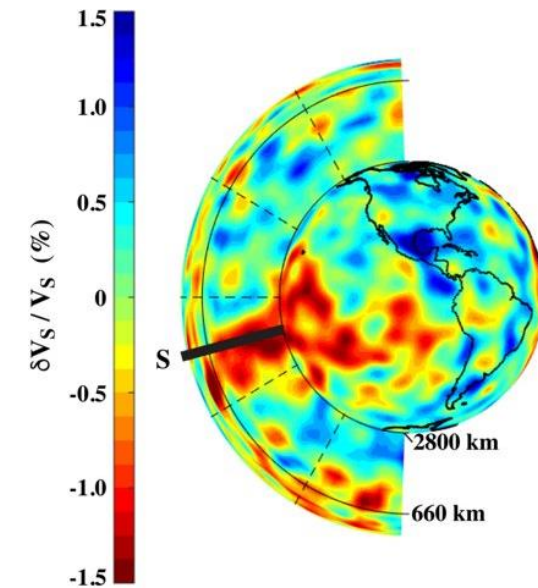
Rencontres du non lin aire 2025, 25-27 mars 2025

## How rheology (shear-thinning and elasticity) influences plume dynamics and morphology ?

Geophysical context : understand planetary mantle dynamics.

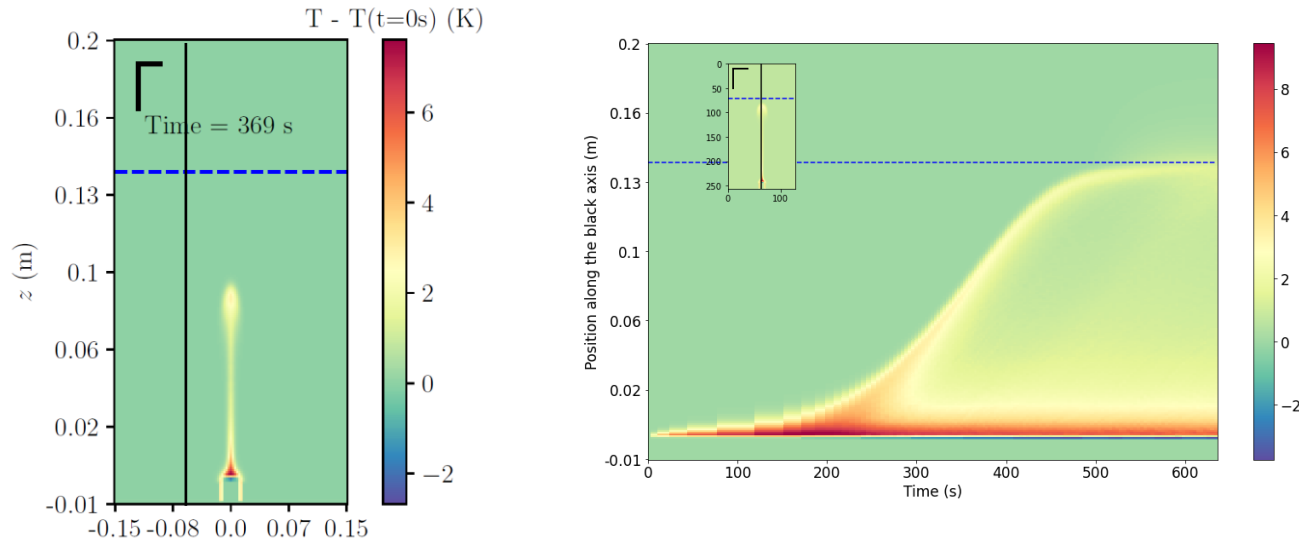


  2010 Tasa Graphic Arts, Inc.



# Thermal plumes in complex fluids

## Temporal evolution – scaling laws at onset time



## Importance of heater size

