

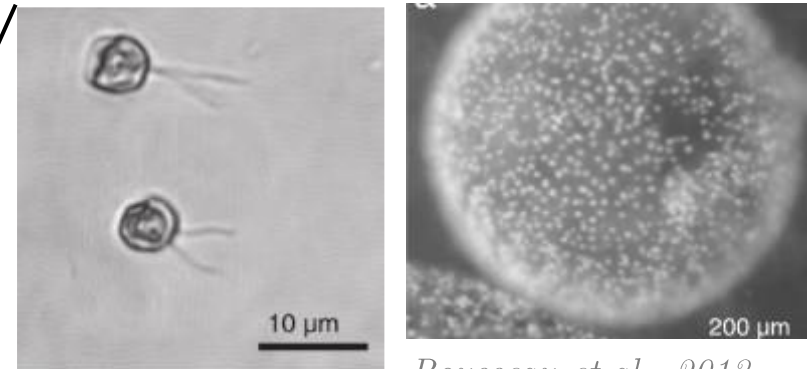
The stability of natural marine foams

J. Michaud¹, L. Zig², E. Breton³, L. Seuront³, F. Elias¹

Foaming event in the English Channel

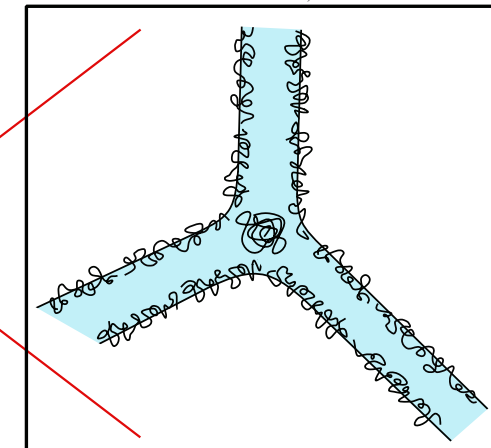
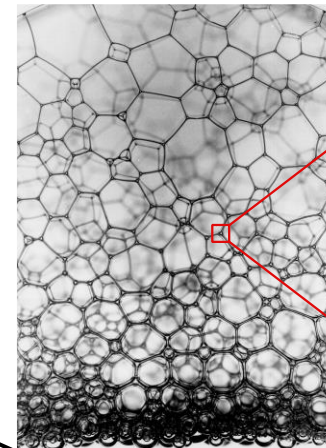


Origin of the foam ?



Rousseau et al., 2013

A blooming microalga:
Phaeocystis globosa



Amphiphilic materials:
Algal proteins?

How can the foam stability be explained?

¹ Laboratoire PMMH - CNRS, ESPCI Paris, PSL, Univ. Paris Cité, SU, UP Cité, Paris

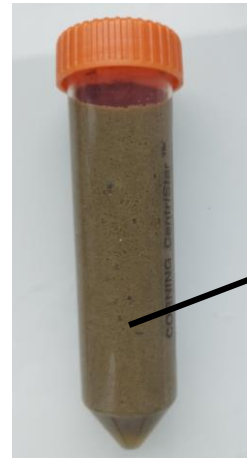
² Laboratoire MSC - UP Cité, CNRS, Paris

³ Laboratoire d'Océanologie et de Géoscience (LOG) - CNRS, Wimereux

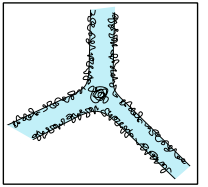


Focus on proteins

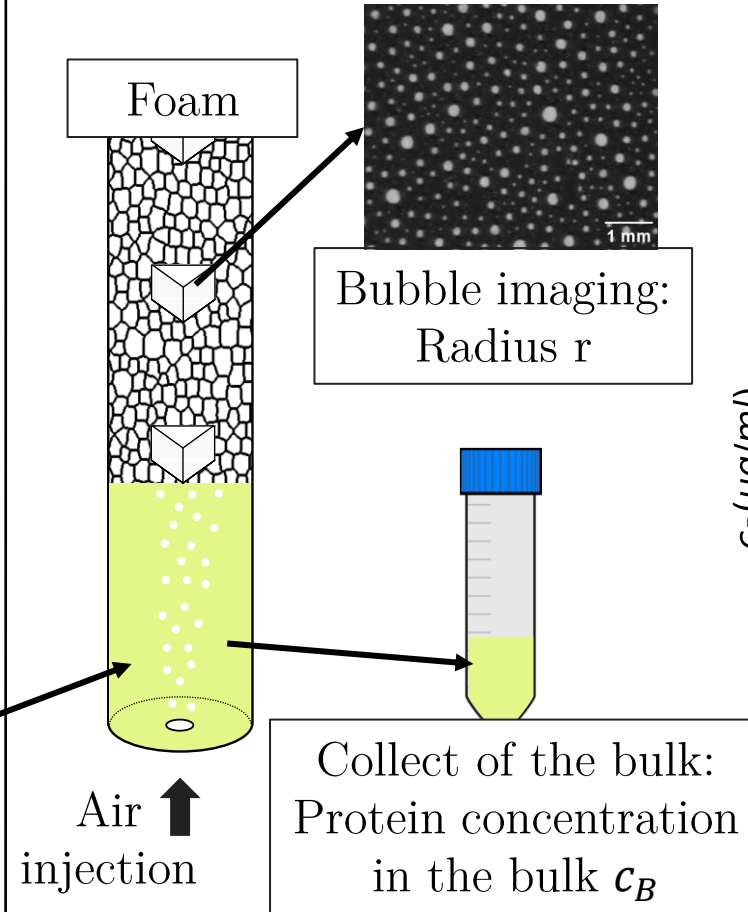
Field samplings



1) Protein identification



2) Foaming dynamics



Depletion of protein in
the bulk

