



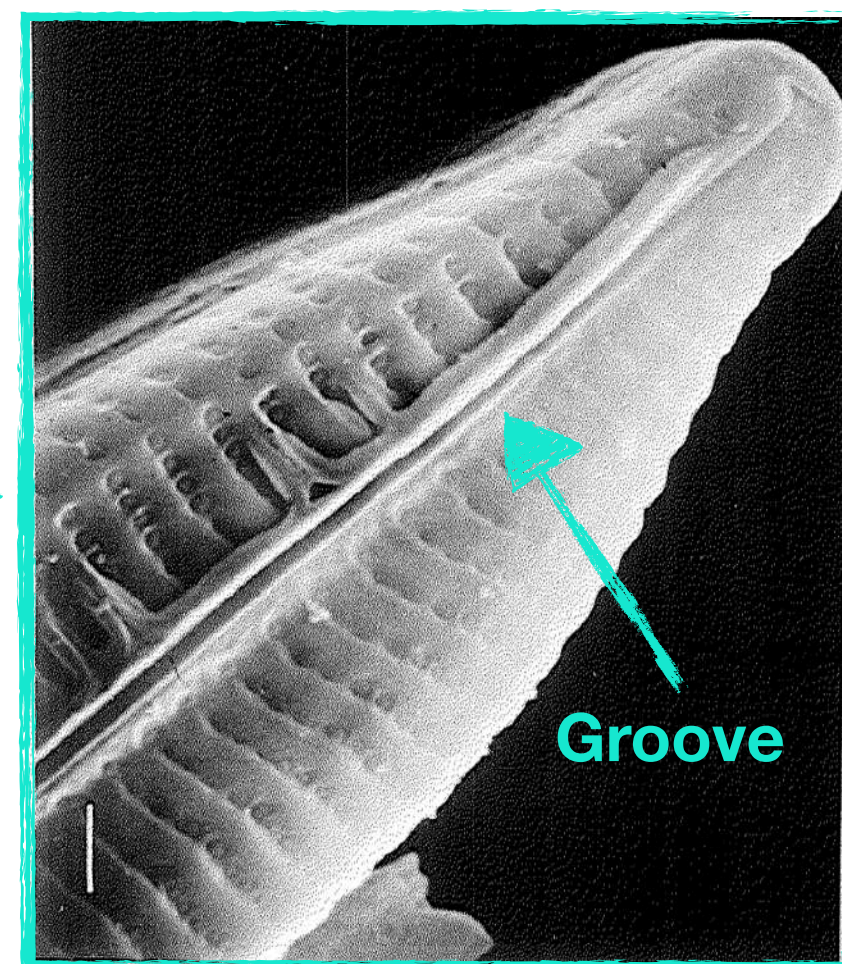
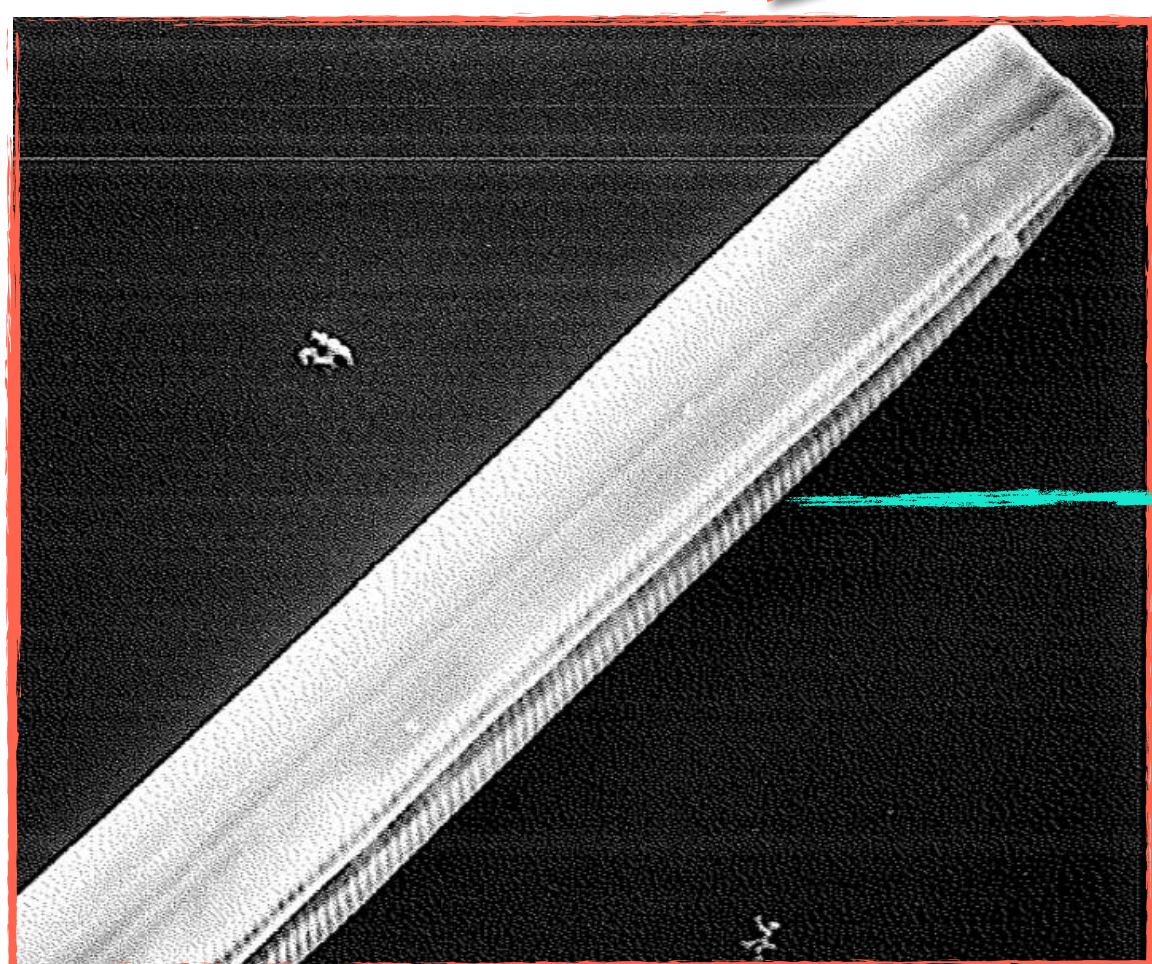
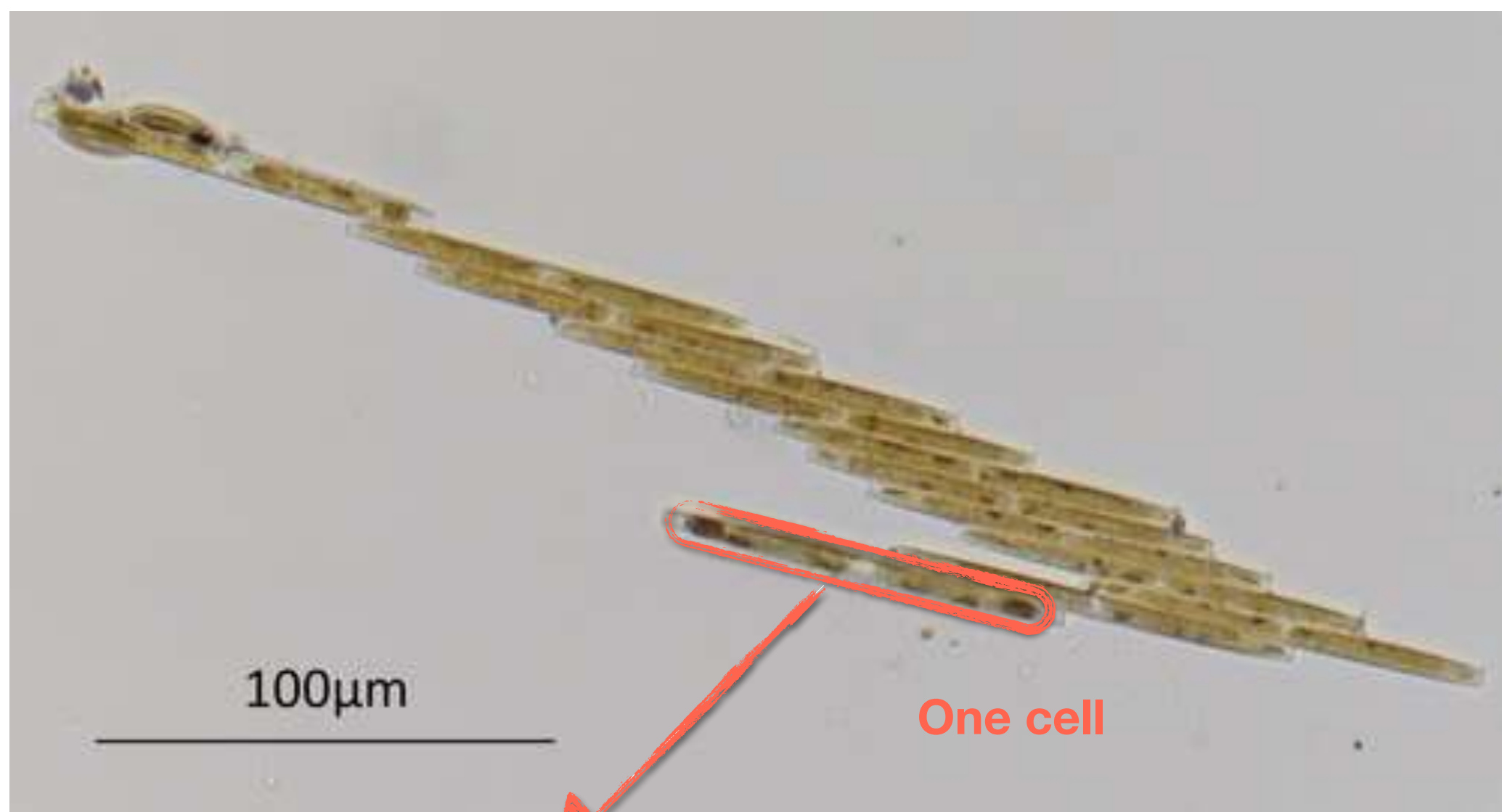
LadHyX

Swimming dynamics and efficiency in diatom chain colonies

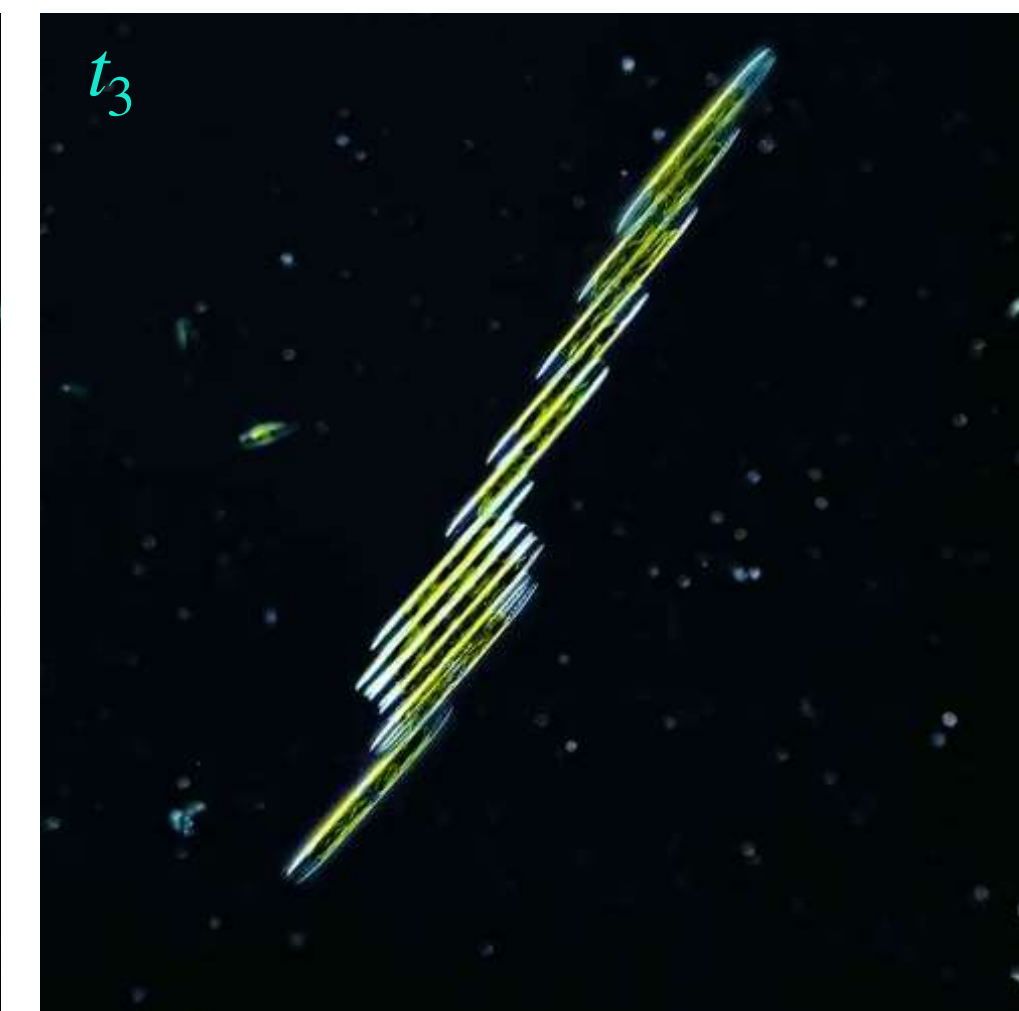
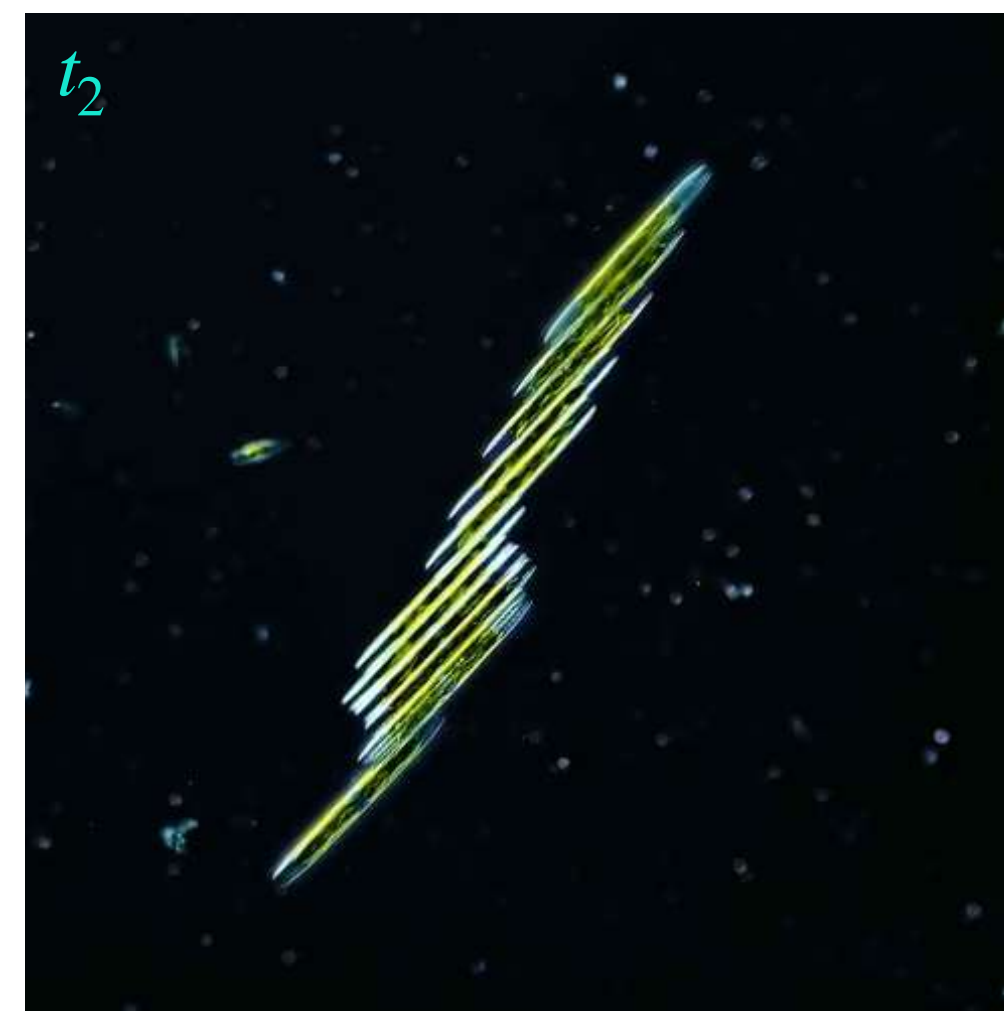
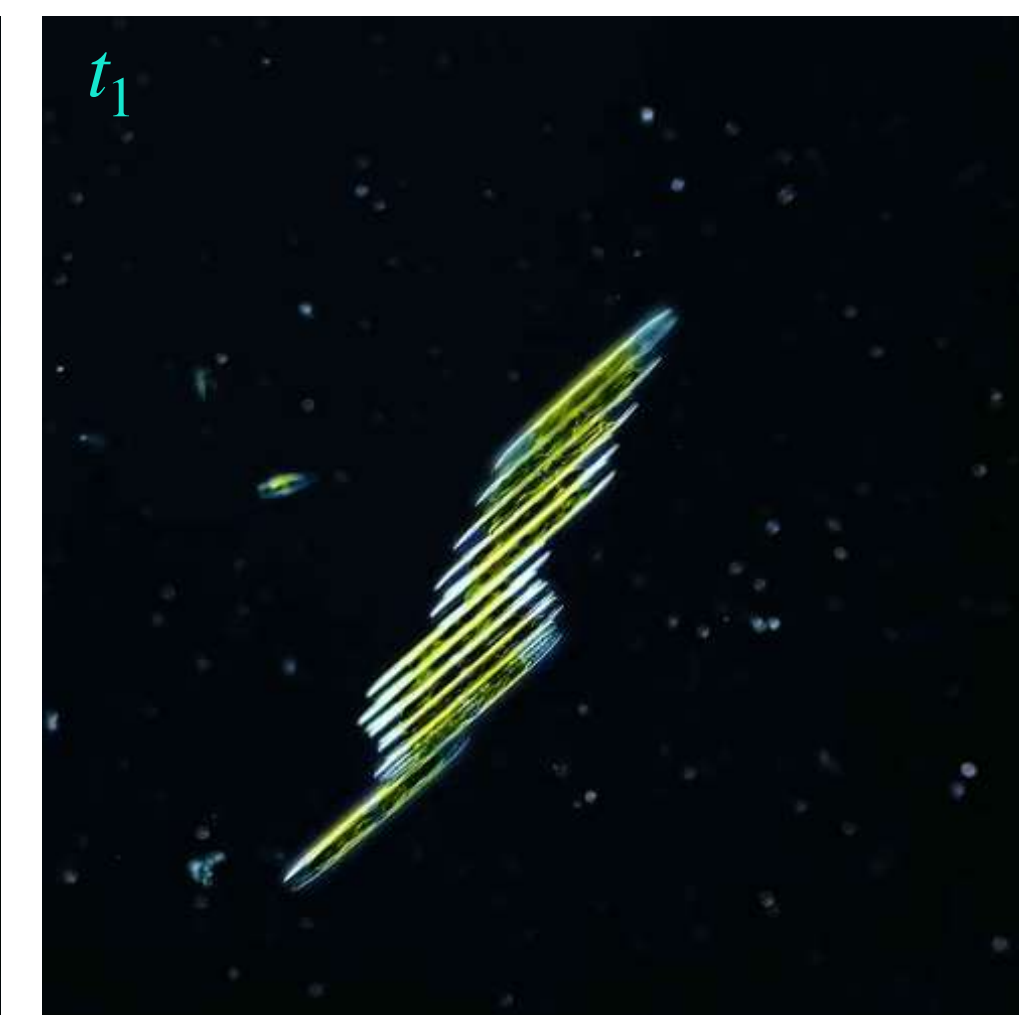
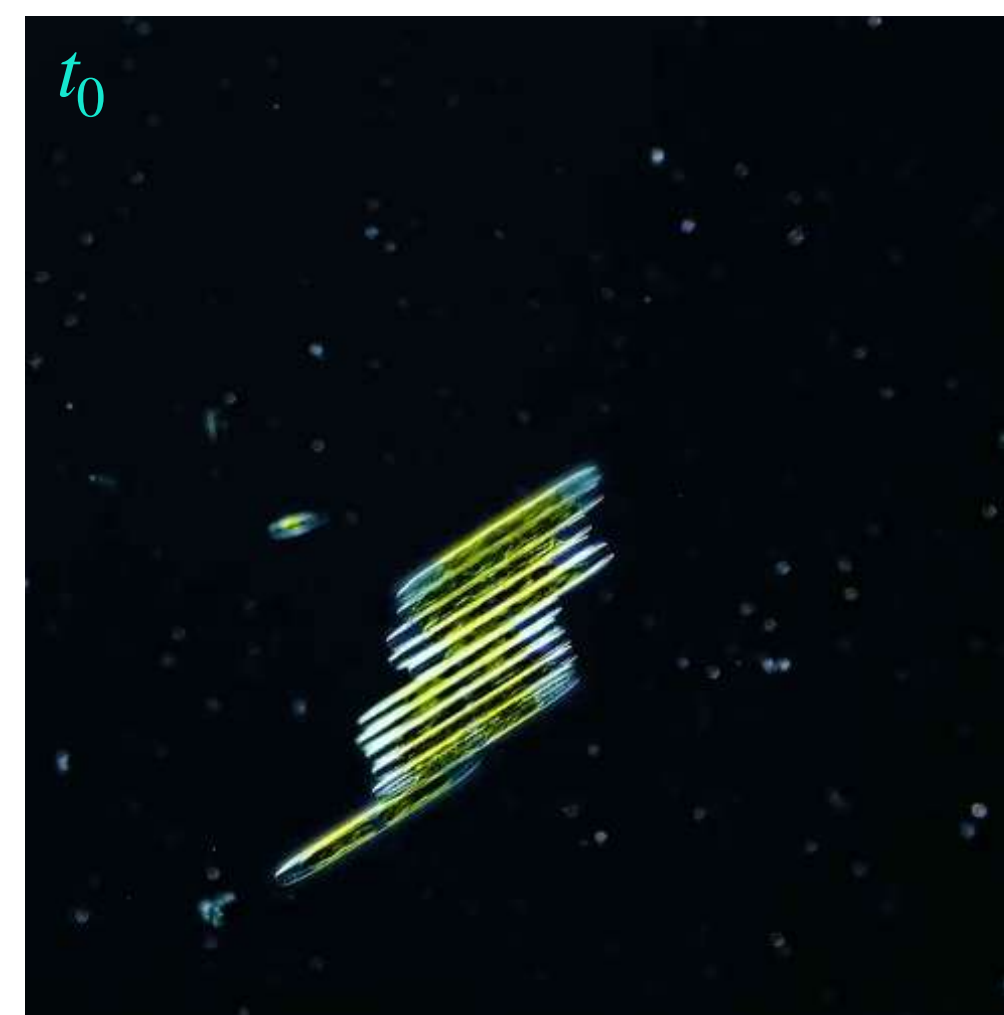


Julien Le Dreff¹, Gabriel Amselem¹, Blaise Delmotte¹

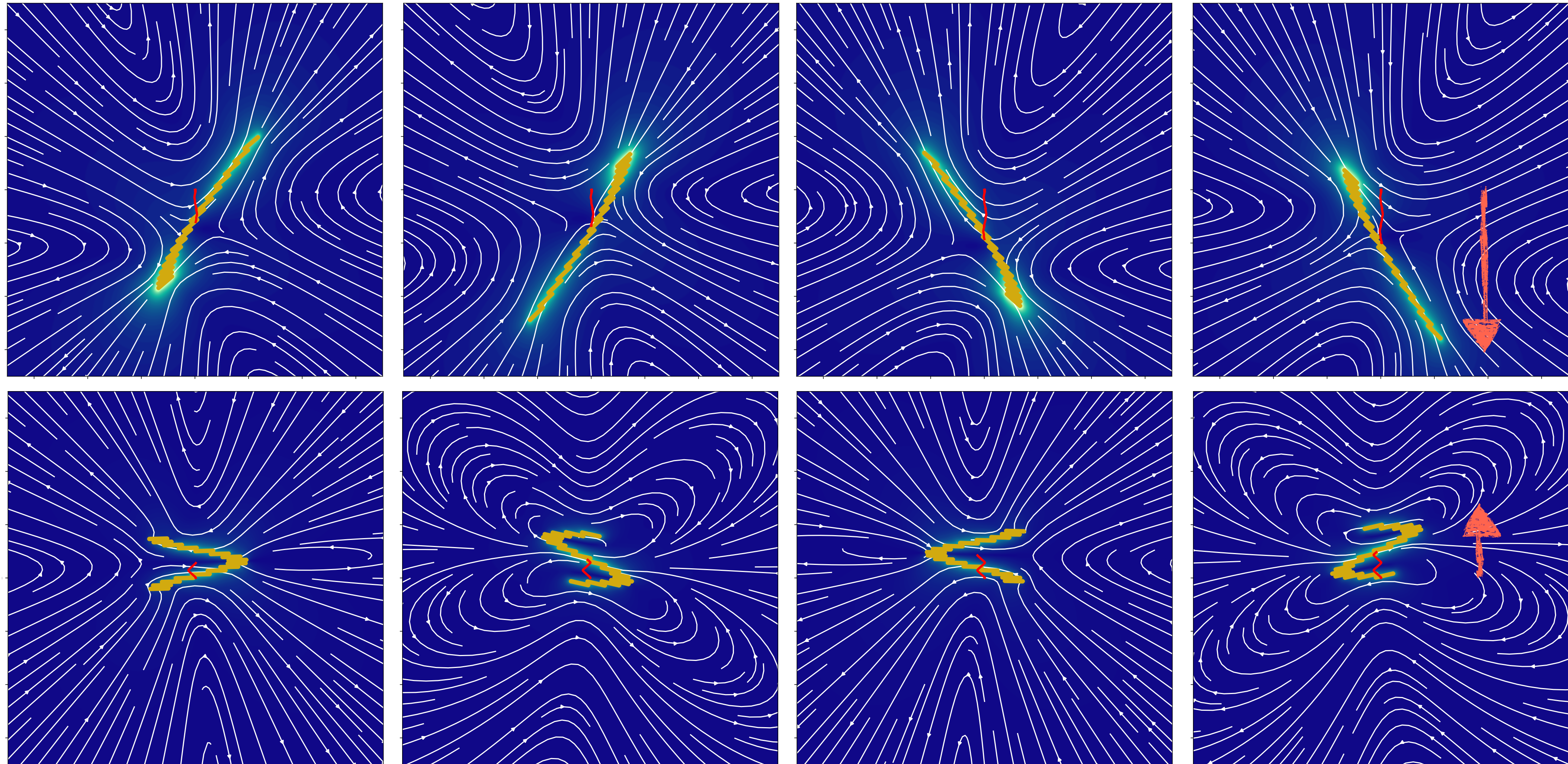
¹LadHyX, CNRS, Ecole Polytechnique, Institut Polytechnique de Paris, 91120 Palaiseau, France



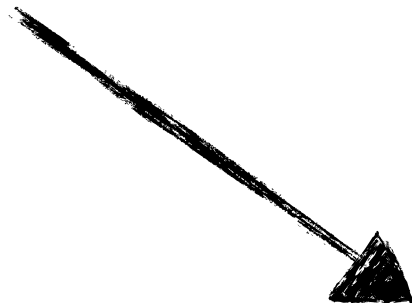
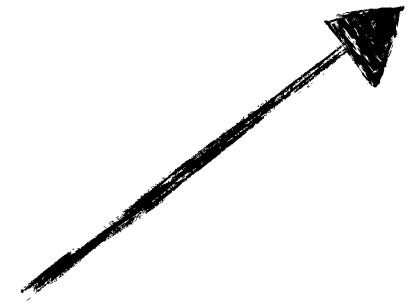
Groove allows the cells to attach and slide parallel to each other



Time



Two different swimming modes



How do swimming modes and cell geometry influence swimming dynamics and its efficiency ?