

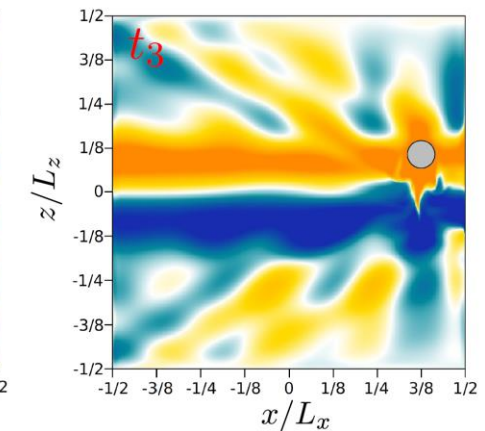
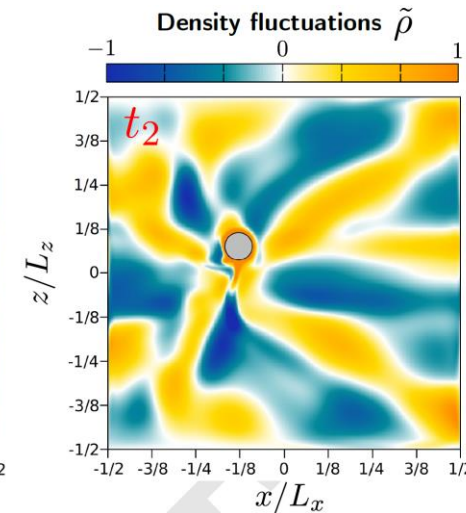
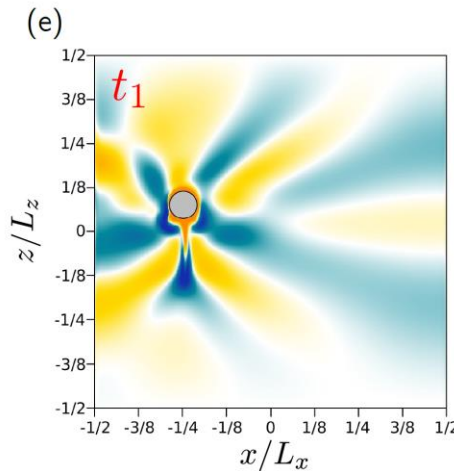
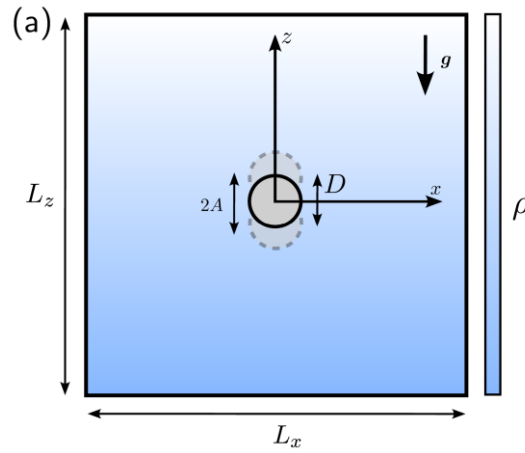
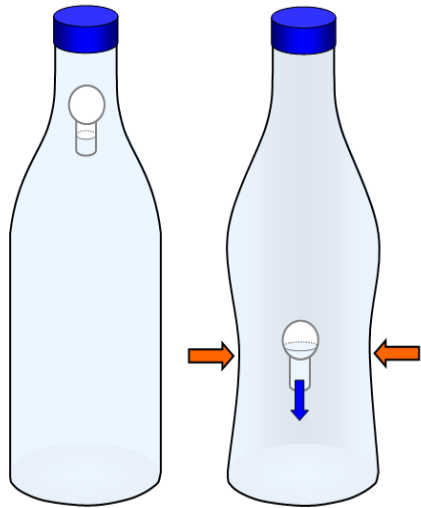
Macroscopic pilot-wave dynamics in density-stratified fluids

Simon Gsell, Patrice Le Gal

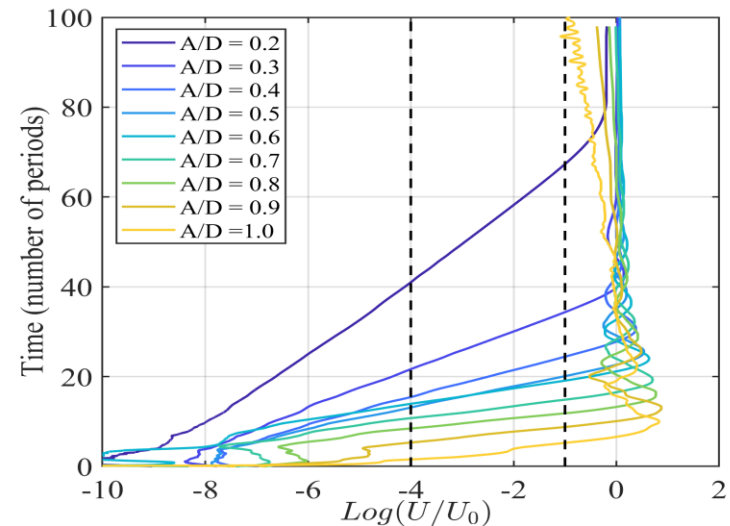
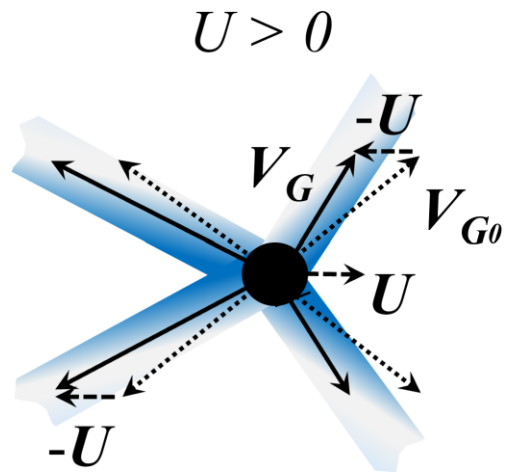
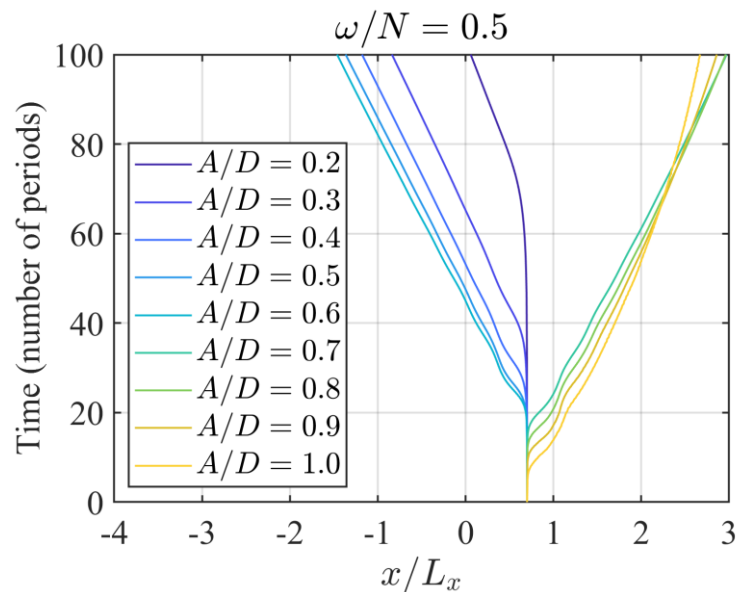
Institut de Recherche sur les Phénomènes Hors Equilibre

Aix Marseille Université, CNRS, Centrale Marseille, France

2D Numerical simulations
lattice Boltzmann method, coupled
with an immersed boundary technique.



Simulations in periodic domains: Doppler effect instability to self-propulsion



Simulations in closed domains: wave réflexions generate a Casimir-like potential

