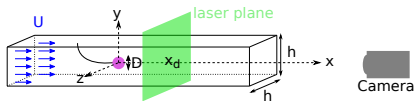


Low frequency oscillation behind a sphere or a cube

Benoît Semin¹, Guy-Jean-Michon², José Eduardo Wesfreid¹

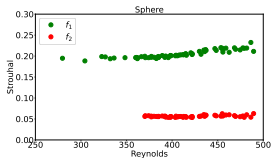
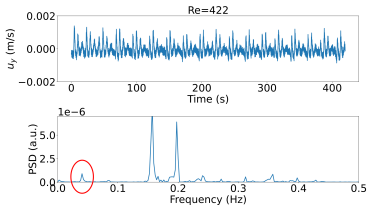
1 : PMMH, CNRS, ESPCI Paris, PSL, Sorbonne Université, Université Paris Cité

2 : Institut Jean-le Rond d'Alembert, CNRS, Sorbonne Université

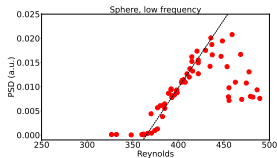


Water channel

$h = 100$ mm, $D = 24$ mm, sphere or cube



Sphere



ESPCI PARIS PSL

SCIENCES
SORBONNE
UNIVERSITÉ

Université
Paris Cité

d'Alembert
INSTITUT JEAN-LE ROND D'ALEMBERT

