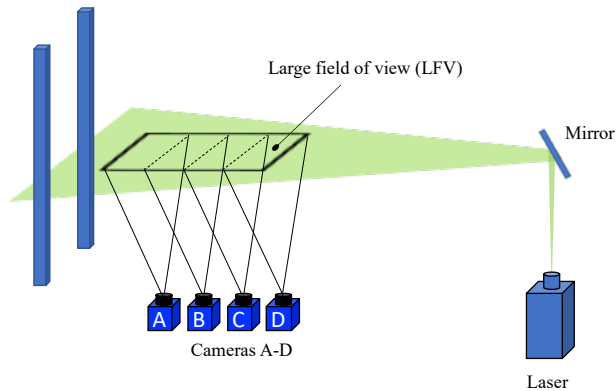
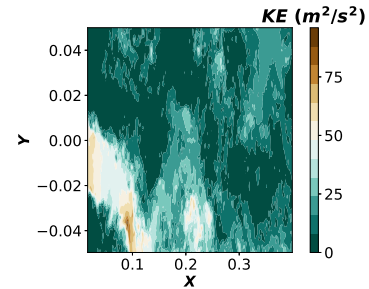


Stochastic bi-stable wake past two square cylinders

I. Kanshana, J. Rolland & A. Barlet



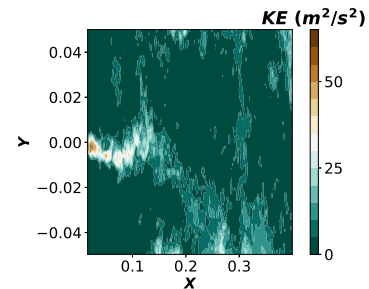
$$G/H = 2.4$$



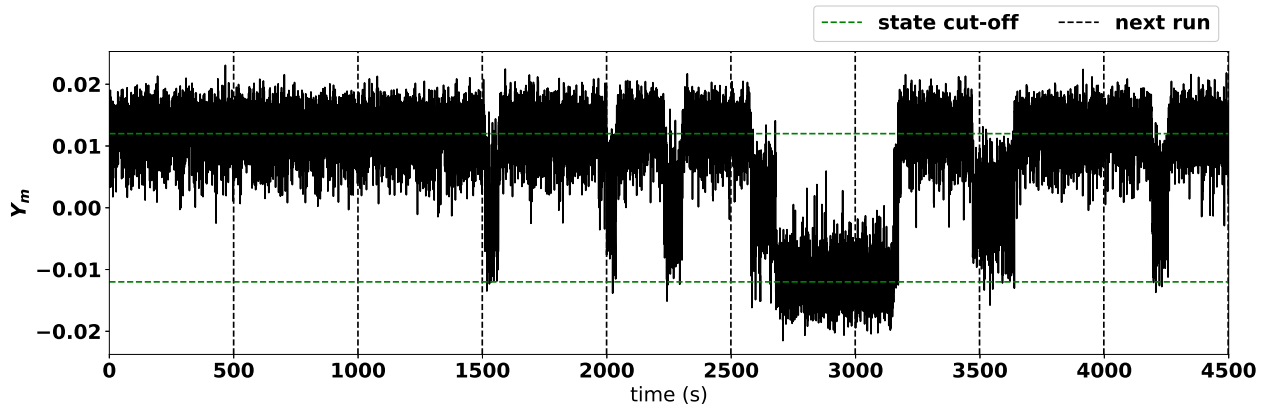
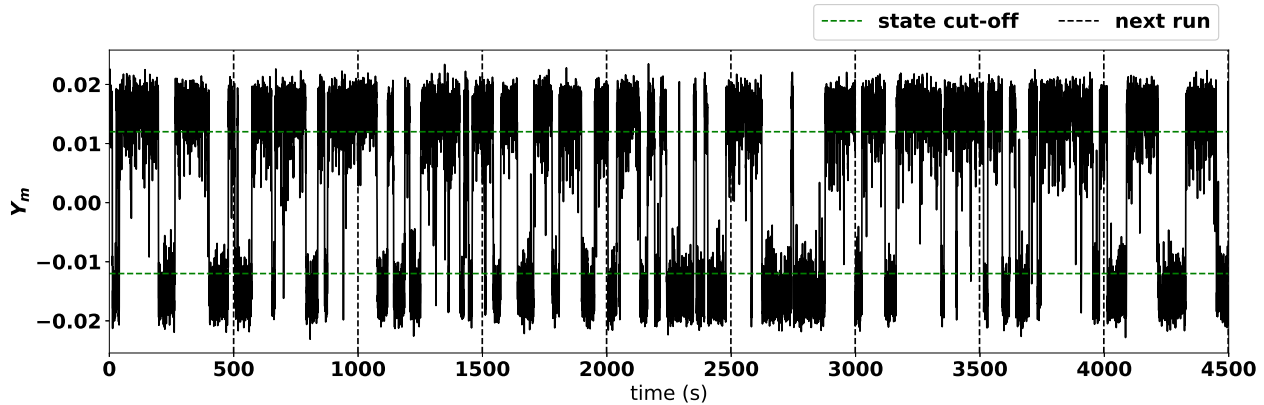
Jet can point left or right

- Symmetry-breaking occurs for a range of G/H .
- We want to use statistical models to re-sample trajectories for a range of G/H and Re .

$$G/H = 1.25$$



Jet can point left, right or stay in line with the flow



Faster switching for larger G/H and waiting-time distribution is Poisson.