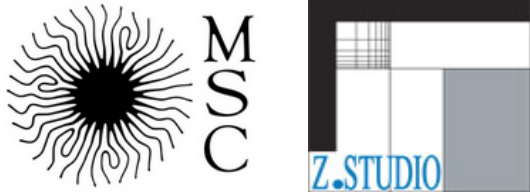


# Caractérisation et Modélisation de la Morphogenèse Urbaine

Pousse Romain<sup>1,2</sup>, Douady Stéphane<sup>1</sup>



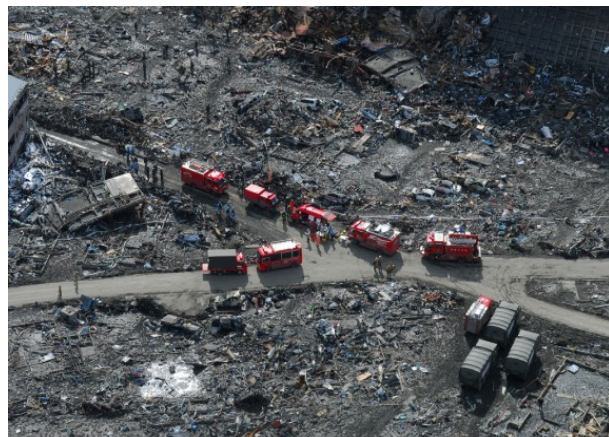
<sup>1</sup>Laboratoire Matière et Systèmes Complexes (MSC) - UMR CNRS - Université Paris Diderot, 10 rue Domon et Léonie Duquet, 75205 Paris Cedex 13  
<sup>2</sup>Z-Studio Architectes - 5 rue de Savoie 75006 PARIS



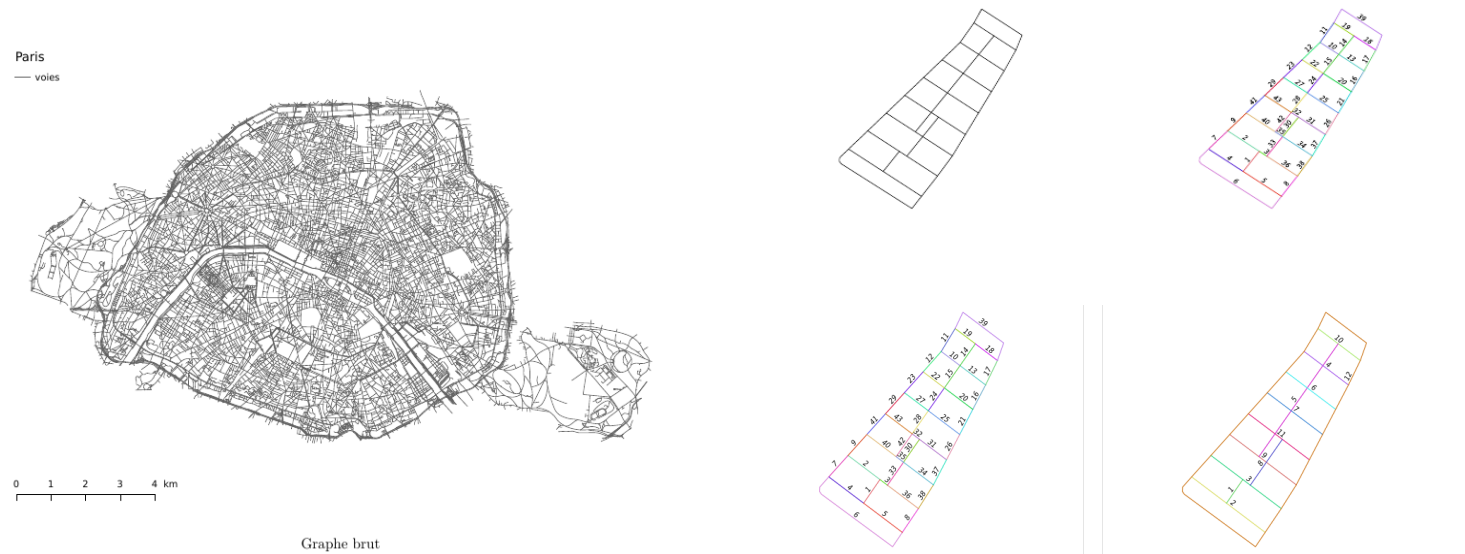
## Le réseau viaire comme élément d'étude



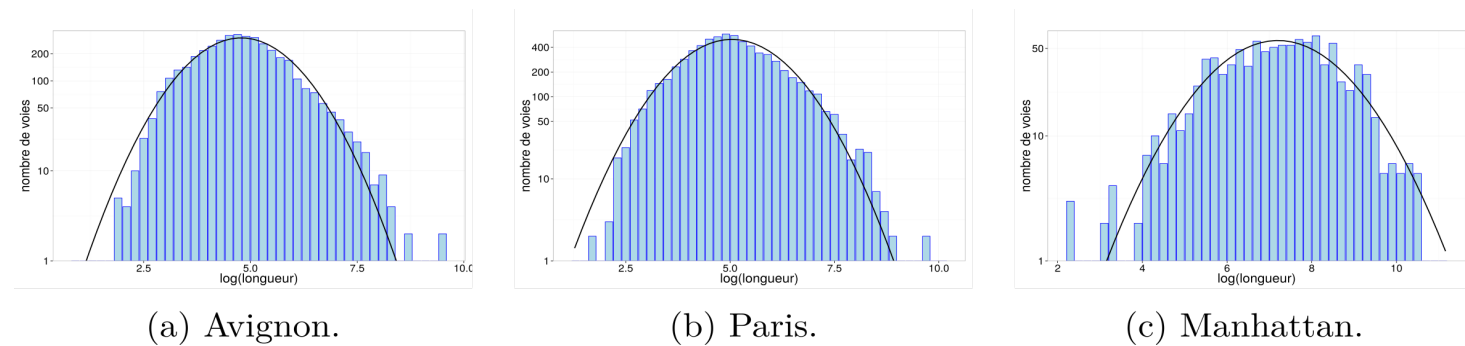
Avenue de l'Opéra, Paris, France



Tohoku, Mars 2011, Japon - Official U.S Navy Page



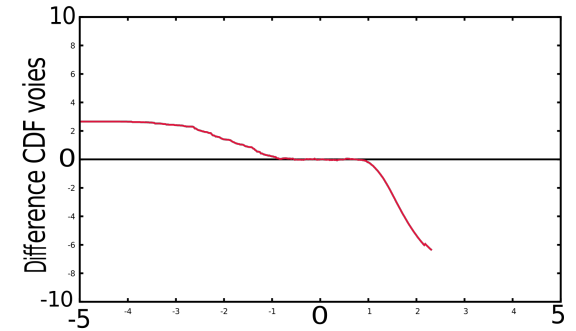
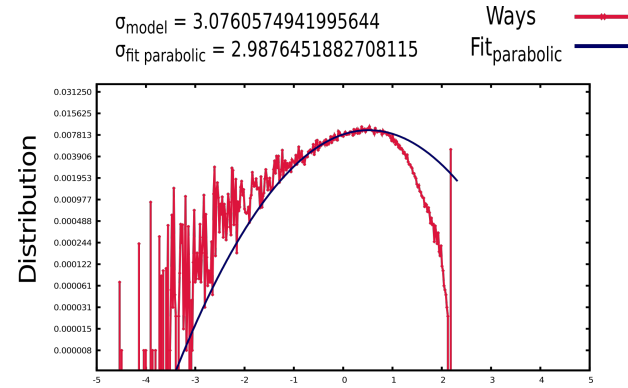
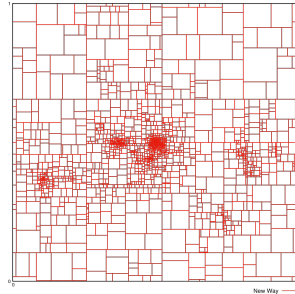
Réseau brut de Paris et création de l'objet voie- Lire les lignes de la ville, Lagesse C., 2015.



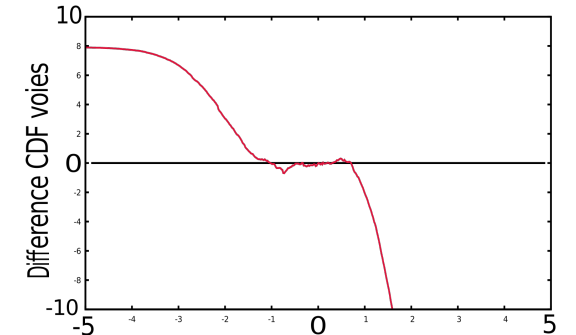
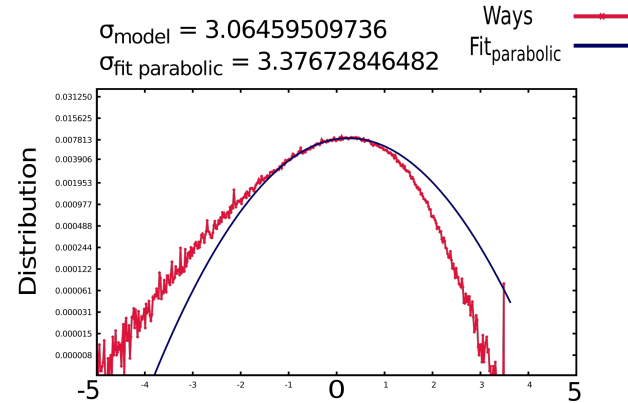
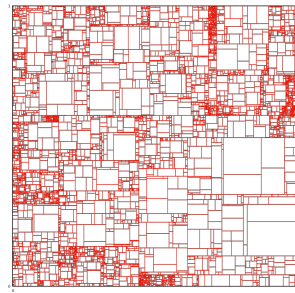
Distribution des longueurs des voies - Lire les lignes de la ville, Lagesse C., 2015.

# Tentative de modélisation du réseau viaire

Dynamic Model



Generation Model



Paris

