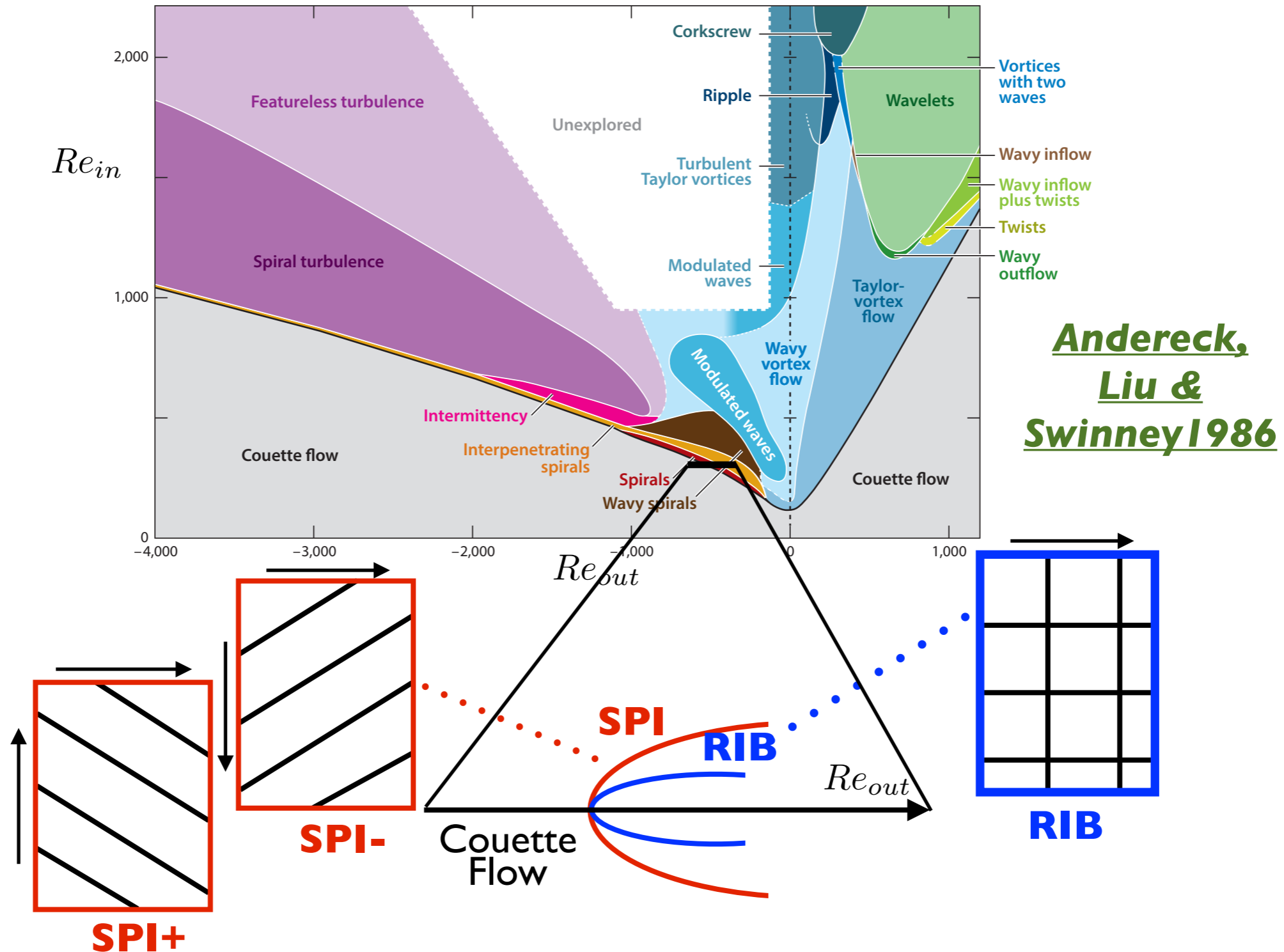


Spirals and ribbons in Taylor-Couette flow

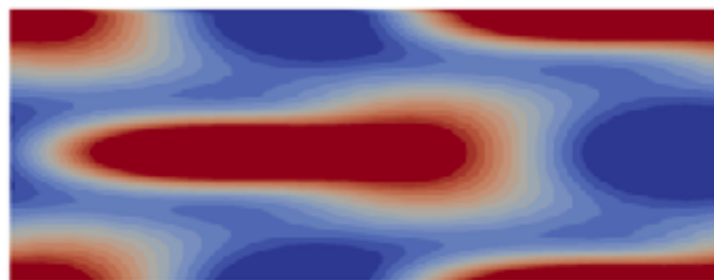
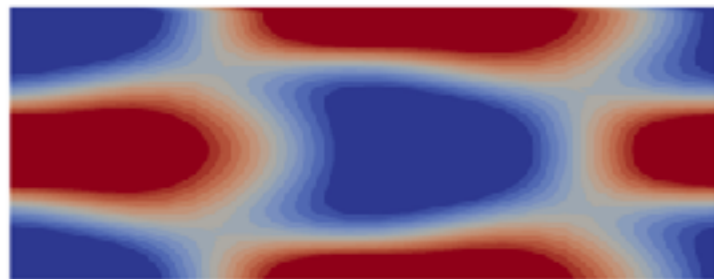
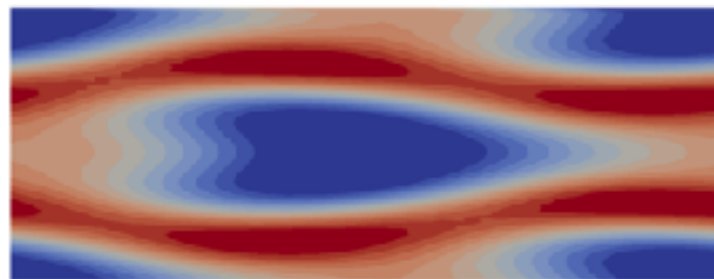
Yacine Bengana & Laurette Tuckerman



Two heteroclinic cycles

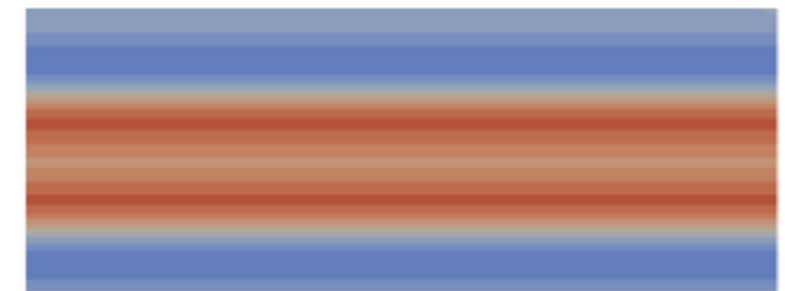
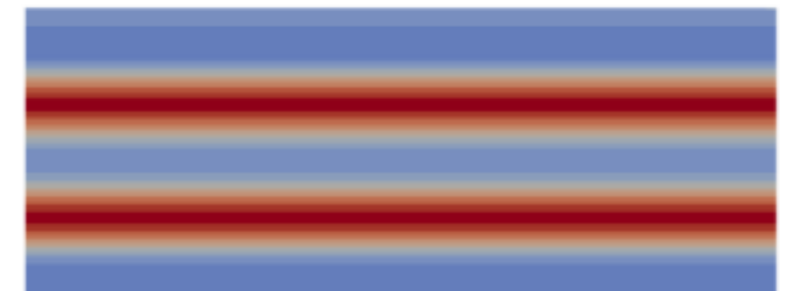
Non-axisymmetric

$$\text{Re}_{\text{out}} = -502$$



Axisymmetric

$$\text{Re}_{\text{out}} = -490$$



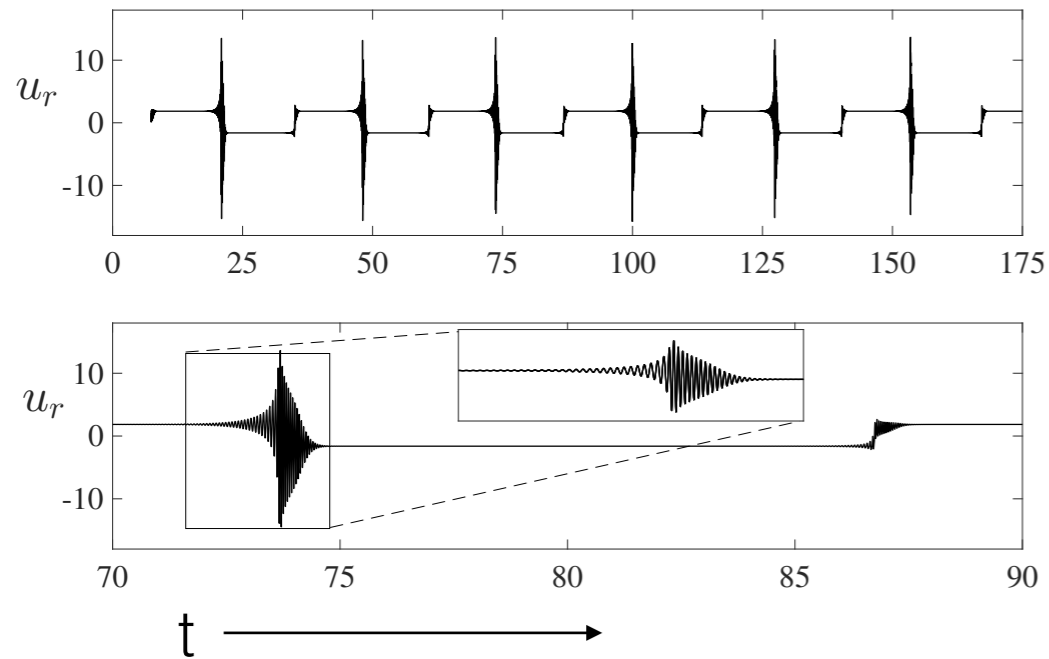
time



Two heteroclinic cycles

Non-axisymmetric

$$\text{Re}_{\text{out}} = -502$$



Axisymmetric

$$\text{Re}_{\text{out}} = -490$$

