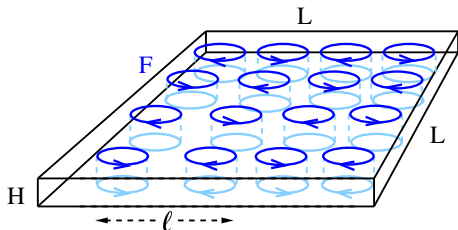


Critical transitions in geometrically constrained turbulence

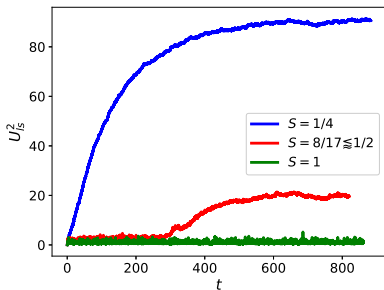
Adrian van Kan, Alexandros Alexakis

- Direct Numerical Simulations (NS incomp.)
- Forcing at scale $k_f = 2\pi/\ell$
- Vary aspect ratio H/L
($\rightarrow S = H/\ell$)
- Observe order transition
- Formation of (spectral) condensate
- Analyse condensate & behaviour close to transition



Results: Large-scale energy of condensate

typical time evolution



saturated condensate state

