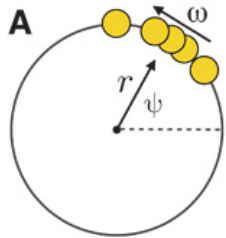


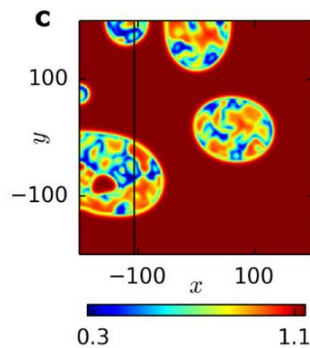
Comportement d'un système d'oscillateurs couplés

Différents types de dynamique

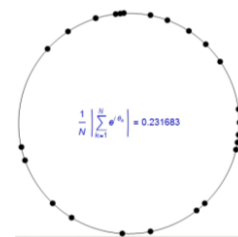
Synchronisation



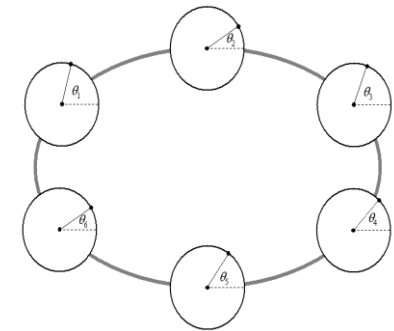
États chimères



Désynchronisation



Exemple:



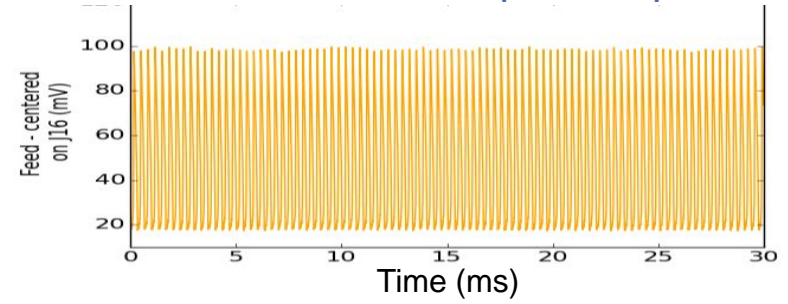
Modèle de Kuramoto

Qu'est-ce qui se passe pour un grand nombre de *systèmes chaotiques couplés*?

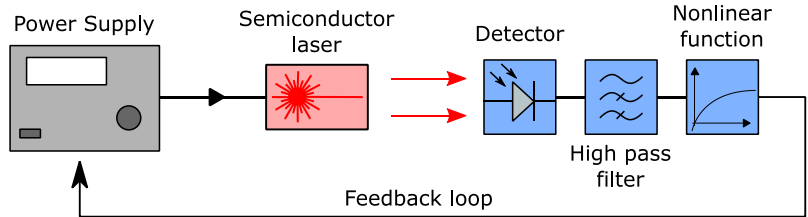
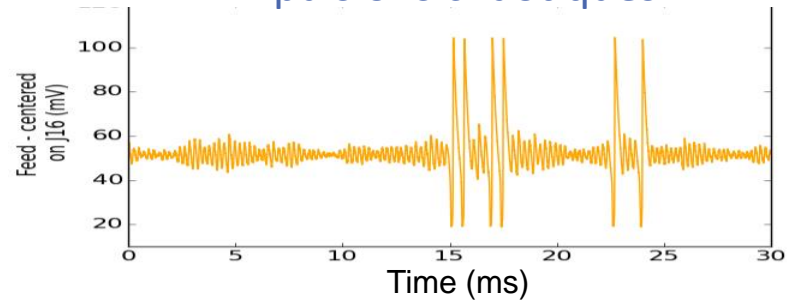
1 laser



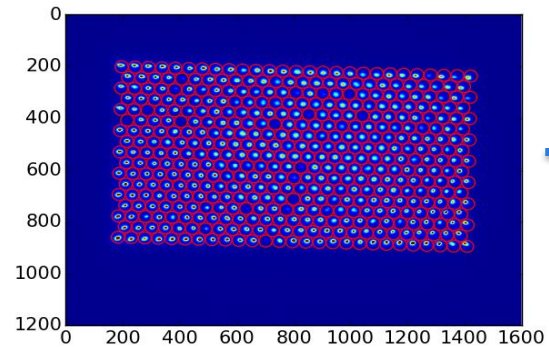
Auto-oscillations périodiques



Impulsions chaotiques



500 lasers?



Venez voir le poster!