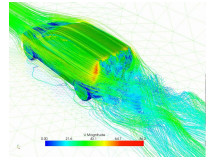


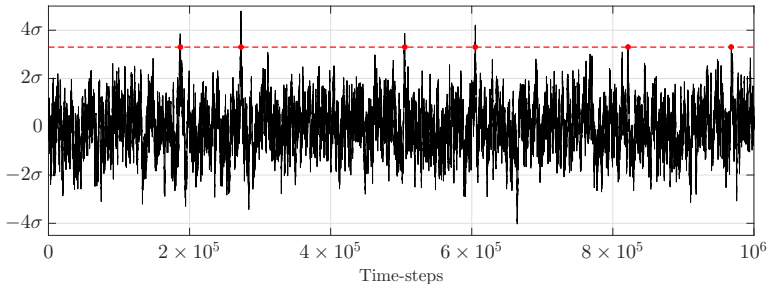
# Extreme fluctuations in turbulent flows

Strong impact on immersed structures

- Premature wear, low output, breakdowns.



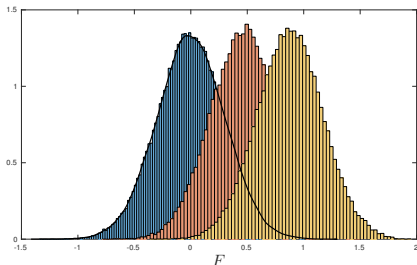
Direct Numerical Simulation is irrelevant for **rare events**



How to simulate events with typical return times of **months**  
without having to simulate months of turbulence ?

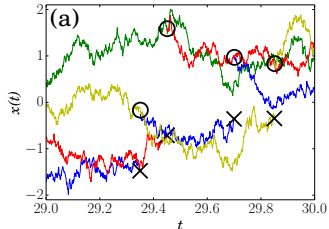
# We use *importance sampling*

Shift the distribution towards extreme values



## Population Dynamics

- Evolution of a population of simulations
- Periodically duplicated/dicarded



Application to a simple test case : computational cost for **statistics** & **dynamics** for **extreme drag fluctuations** reduced by a factor 100