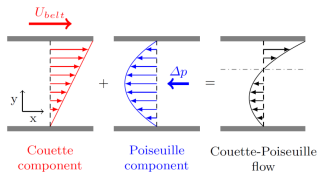
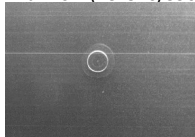


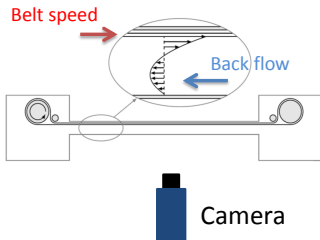
Subcritical transition to turbulence in Couette-Poiseuille flow



Laminar flow ($Re < 510/590$) Turbulent spot ($Re = 630, 5x$)



Laminar-turbulent bands ($Re = 670$)



Turbulent flow ($Re = 1000$)

$$Re = U_{belt} \cdot h / \nu$$

(lukasz.klotz@espci.fr)

Spatiotemporal diagrams of streamwise velocity

