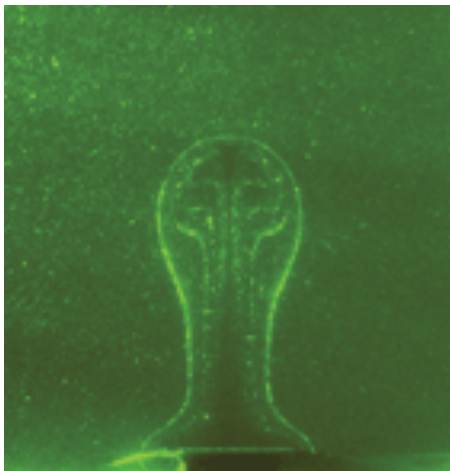
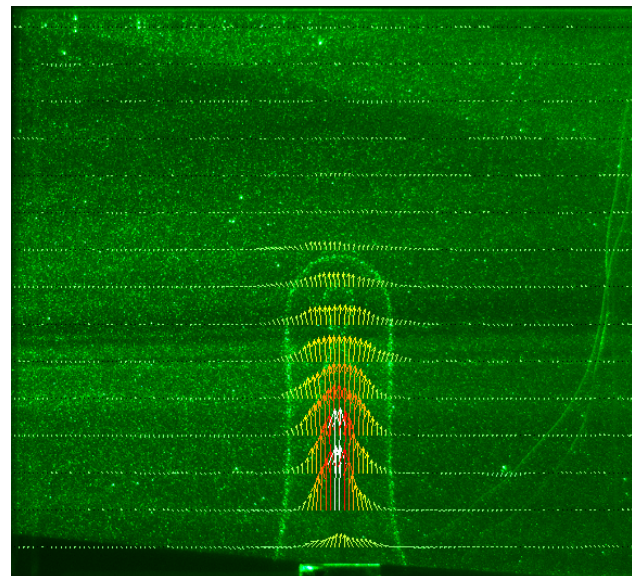


# Panaches thermiques dans les fluides à seuil

Anne Davaille<sup>1</sup>, Blandine Gueslin<sup>2</sup>, **Anna Massmeyer**<sup>1</sup>  
(1. Laboratoire FAST, Orsay / 2. IPGP, Paris)



Sucre (newtonien)



Carbopol (contrainte seuil)

. Carbopol (contrainte seuil, rheo-fluidifiant)+ glycerol + H<sub>2</sub>O:

$$\sigma_{\tau\eta} = \alpha g P / \kappa C_p$$

Paramètre-clef :  $Y_0 = \sigma_{\tau\eta} / \sigma_0 = \alpha g P / \sigma_0 \kappa C_p$

